

ANSWERS

THE EN WORD FAMILY

Instructions: Look at the scrambled letters and try to make a word by putting the letters in the right order! Have fun!

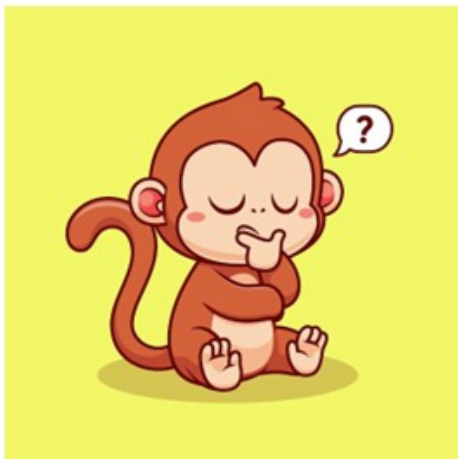
1. NTE → **TEN**

2. NEH → **HEN**

3. PNE → **PEN**

4. NME → **MEN**

5. DNE → **DEN**



How Did You Do? 😊 😐 😞