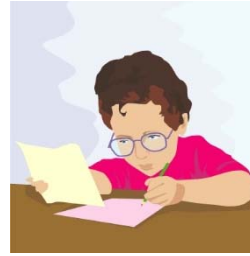


Name _____ **Suffix -less**



Suffixes

A suffix is a group of letters added to the end of a root word.

-less

means "without"

Examples

countless, stainless, mirthless

DIRECTIONS: Write the word next to each meaning.

Word	Meaning
	without a moon
	without snow
	without luck
	without a seam
	without doubt
	without fruit
	without flavor
	without a point
	without noise