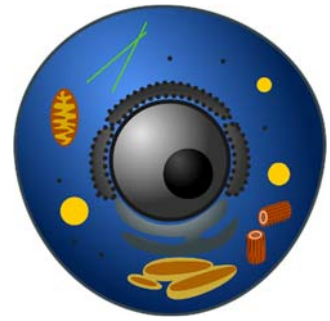


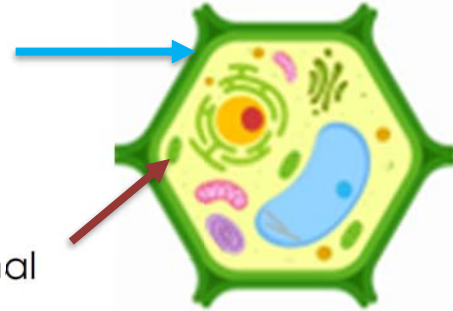
Name _____



Comparing Plant and Animal Cells - Part 1

Plant cells and animal cells are both eukaryotic cells, which means they have a defined nucleus and membrane-bound organelles. However, there are significant differences between these two cell types.

One major difference is the presence of a **cell wall** in plant cells. Plant cells have a rigid cell wall made of cellulose, which provides structure and support. Animal cells lack a cell wall.



Another key difference is the presence of **chloroplasts** in plant cells. Chloroplasts are responsible for photosynthesis, the process by which plants make their own food using sunlight. Animal cells do not have chloroplasts.

Despite these differences, plant and animal cells also share many similarities, including the presence of a cell membrane, nucleus, mitochondria, and other organelles.

Questions

1. What is the major difference between plant cells and animal cells?
2. What is the function of the cell wall in plant cells?
3. Which organelle is responsible for photosynthesis, and in which type of cell is it found?
4. Name one organelle that both plant and animal cells have in common.
5. True or False: Animal cells have chloroplasts.