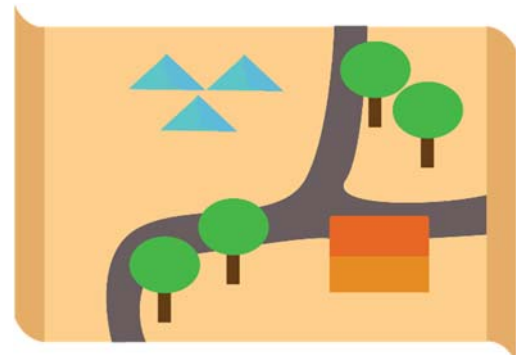


Name _____

The Great April Fool's Day Prank

Answers:



1. Kim and Jen were known as the mischievous duo in their neighborhood.
2. Their plan for April Fool's Day was to create a fake treasure map and lead their friends on an adventure around the town.
3. They made the treasure map look authentic by aging the paper with tea stains and burning the edges.
4. They found the final clue at the spot marked with an "X" on the map.
5. They realized that the true treasure of April Fool's Day was not material possessions, but the laughter, camaraderie, and bonds they shared with their friends.