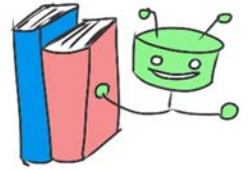


Name \_\_\_\_\_ Poetry



# Sounds in Poetry

**DIRECTION:** Match each sound-related literary device with its definition.

- |          |   |                |
|----------|---|----------------|
| _____ 1. | The intentional repetition of consonant sounds in nearby words, often at the beginning of each word | A Assonance    |
| _____ 2. | The intentional repetition of vowel sounds  | B Alliteration |
| _____ 3. | A word that sounds like the sound it is describing  | C Rhyme        |
| _____ 4. | When the end of two words sounds the same   | D Rhythm       |
| _____ 5. | An audible pattern in verse established by the intervals between stressed syllables                 | E Onomatopoeia |
| _____ 6. | Intentionally repeating sounds or words   | F Repetition   |
| _____ 7. | Repetition of a sequence of two or more consonants, with a change in the intervening vowel.         | G Refrain      |
| _____ 8. | A phrase, line, or lines repeated at intervals during a poem, especially at the close of stanzas    | H Consonance   |