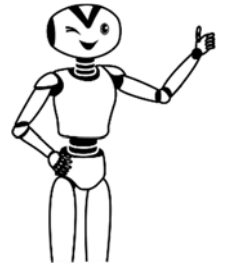


Positioning Adjectives



Adjectives usually go before the noun they modify. You can use more than one adjective to modify a noun, but you cannot put words in between an adjective and the word that it modifies.

DIRECTIONS: Rewrite each sentence to add an adjective of your choice. Place your adjective in the correct position in the sentence.

1. There is my kitten.

2. That is a robot.

3. I do not like this coat.

4. We had our dinner.

5. My sister finally arrived.

6. We got a rug for the living room.

7. Here is your toothbrush.